

# The business case for Nature

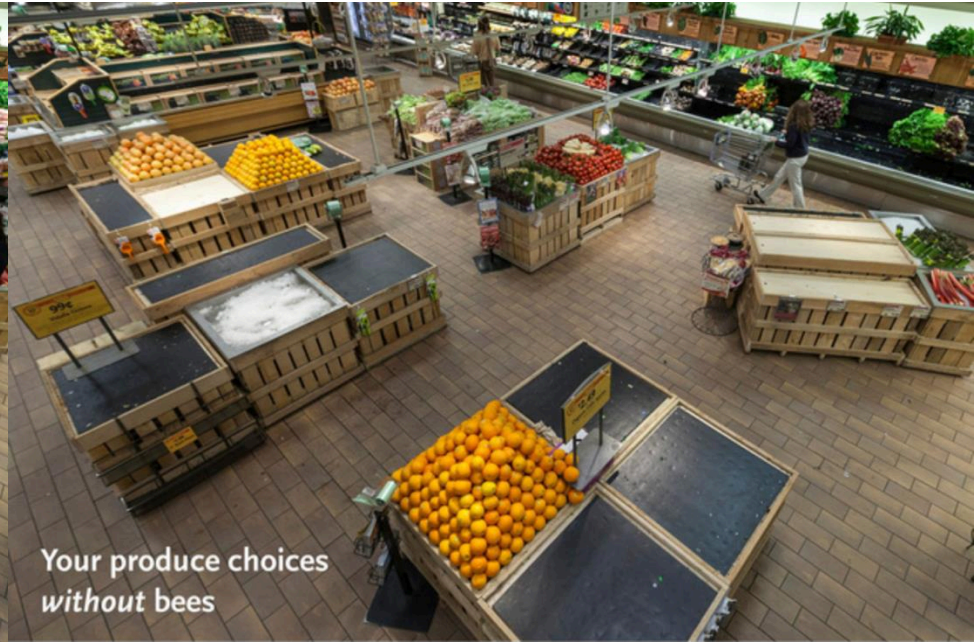
A catalyst for resilience and opportunities



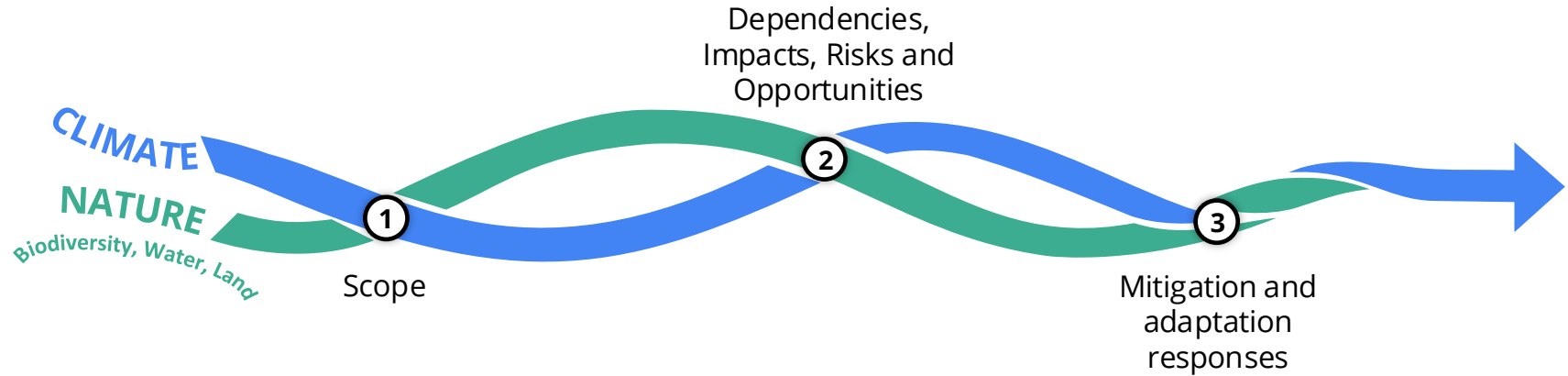
**Quantis**  
A BCG COMPANY

 Sustainable  
Retail Summit

# Without Nature, empty shelves



# A joint Climate & Nature lens unlocks synergies and avoid trade-offs



***Companies depend on water, land and soil quality to operate, and are financially exposed when these ecosystem services degrade***

# Nature degradation is already translating into material, economy-wide financial losses



## Pests & diseases

### Yield losses

- + **Banana / Global**  
TR4 disease driving **400M \$ Banana production losses in Taiwan, Malaysia and Indonesia**<sup>1</sup>
- + **Wheat crops / Northern Europe** Fungal diseases (e.g. wheat rusts) causing yield losses of **>50%** in mild winters
- + **Vineyards / France**  
Phylloxera (aphid) infestations from the late 1860s destroyed up to **~100%** of vines in key regions, triggering **multi-billion-EUR-equivalent losses** and forcing nationwide replanting on resistant rootstocks



## Water stress

### Forced factory shutdowns

- + **Coca Cola / India bottling site 25M \$** bottling plant shut down
- + **BASF / Germany Rhine drought in 2018**  
Acute fragrance ingredient shortages and temporary product discontinuation

### Disturbance of agricultural activities

- + **Agriculture / Morocco**  
Repeated droughts and water scarcity driving severe yield losses, **up to 30–40% in extreme drought years**



## Pollinator loss

### Yield losses

- + **Rapeseed / Brazil**  
Yields dropped by up to **55%** when fields were located **>300m** from native vegetation<sup>2</sup>
- + **Sunflower** - Pollination by bees is important for the production of high-quality seeds (genetic diversity)
- + **Cocoa**  
Production reduced by **20–30%** due to lack of effective pollination by midges



## Climate & deforestation

### Crops relocation

- + **Cocoa / Ivory Coast** - 80%, or 13m hectares, of forest have disappeared since the 1960s due to monoculture and illegal deforestation, and disturbances (high temperatures, droughts) could render cultivation impossible within 30 years

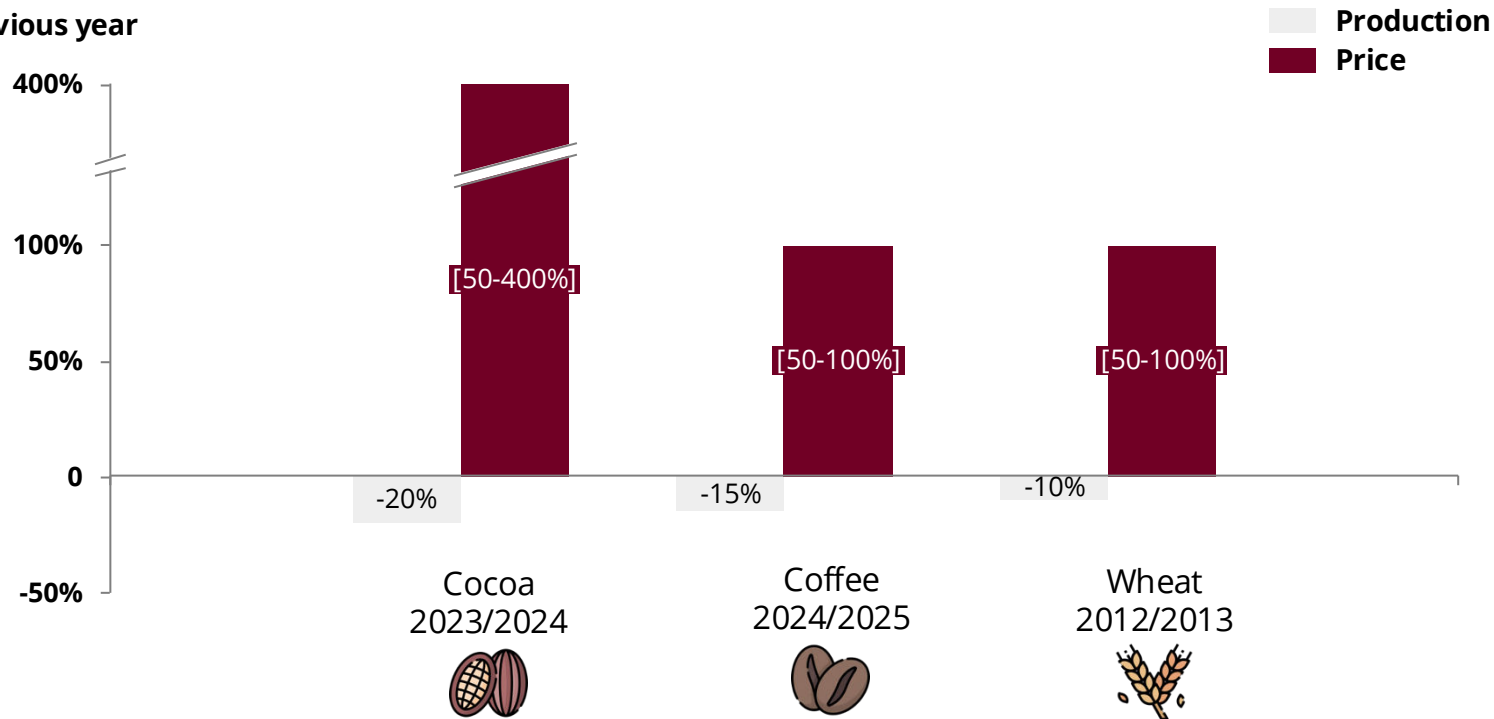
### Rising costs / more insurance coverage

- + **Cereal farming / France**  
**1,000–2,000 municipalities** unable to secure insurance due to climate change



# From ecosystem disruption to market volatility...

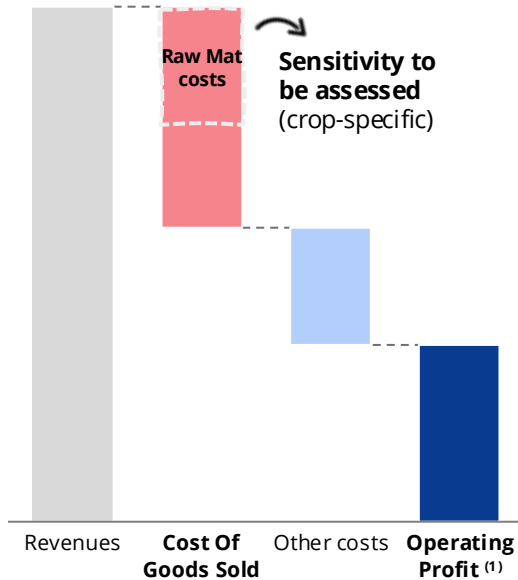
Production & price evolution vs. previous year



# ...translating into direct impacts on revenues and operating profit

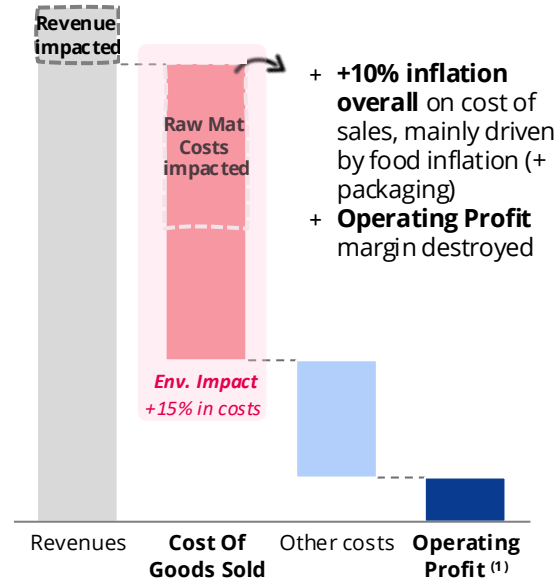
Fictive company simplified P&L – [FY25, USD]

CURRENT



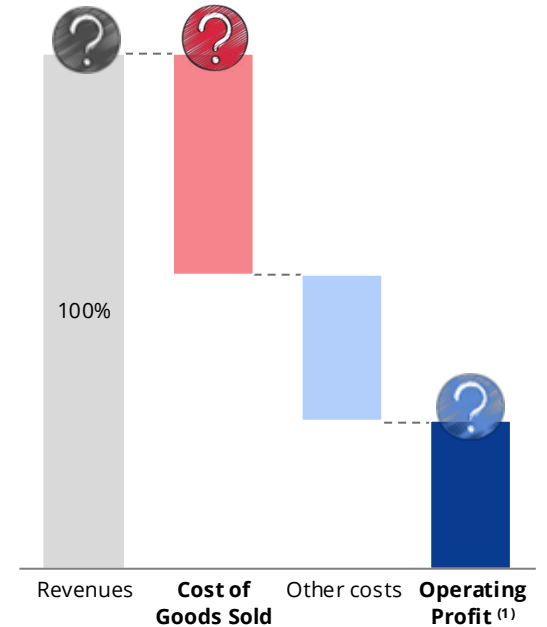
2030 'Business as usual' – [USD]

TREND SCENARIO - 2030



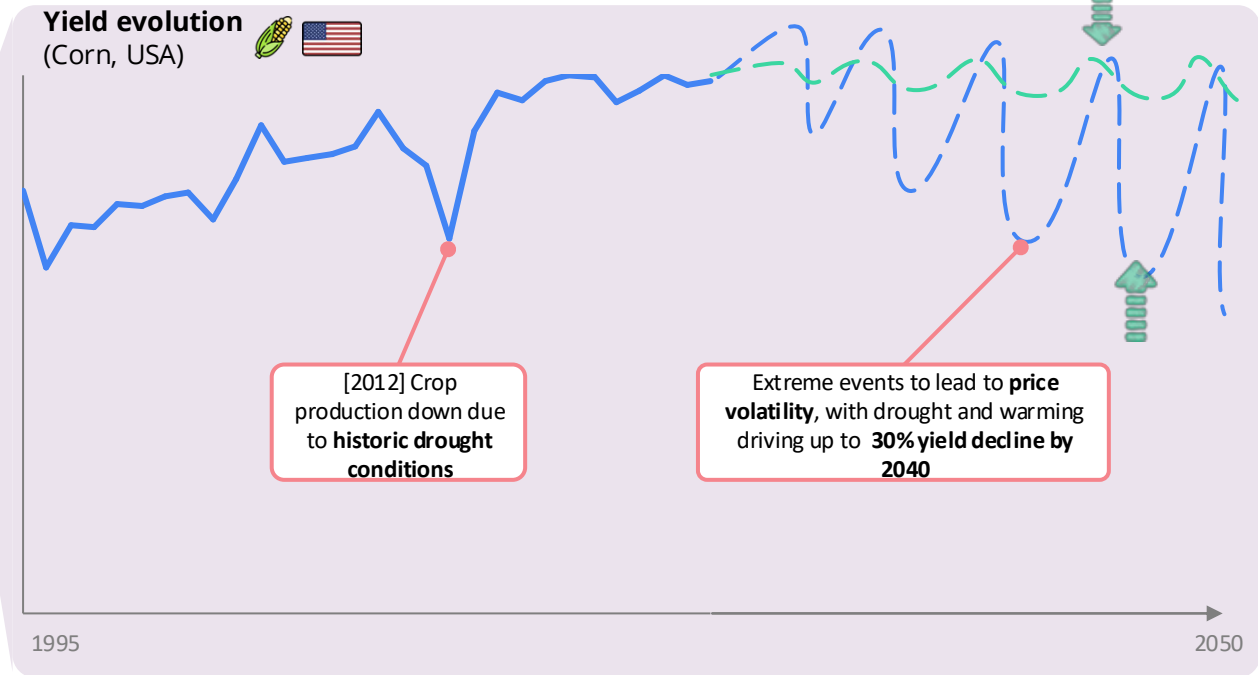
2030 'High Resilience' – [USD]

RESILIENCE SCENARIO - 2030



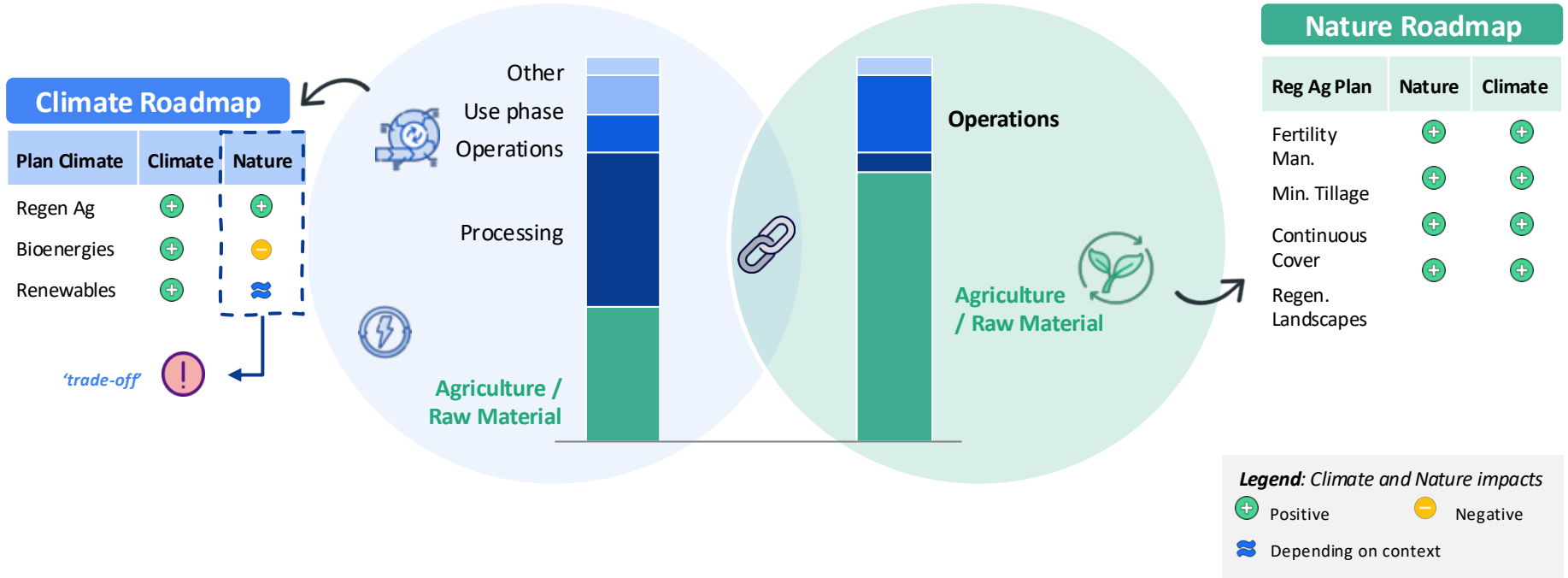
# Solutions to limit Nature risks exist: Regenerative agriculture has shown it can help reduce volatility in ag supply chains

	Yield Risk	Price Volatility
Coffee	High	High
Cocoa	High	High
Corn	Mid-High	High
Cereals	Mid-High	Mid-High
Rice	Medium	Mid-High
Palm Oil	Medium	Mid-High
Sugar	Medium	Medium
Soybeans	Medium	Medium



000

# Addressing Nature unlocks positive climate outcomes across the value chain



# Supply chain resilience combines a few critical levers

## Reduce exposure

- Regenerative agriculture
- Landscape & water stewardship
- Ingredient security

## Absorb volatility

- Flexible sourcing & contracts
- Risk-sharing mechanisms
- Portfolio diversification

## Anticipate disruption

- Predictive data & early warning
- Scenario-based planning

**Supply chain resilience = business case for sustainability**

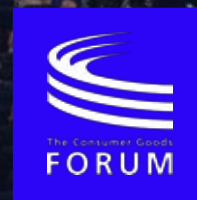


Thank you



# Sustainable Retail Summit

Paris 2026



**Quantis**  
A BCG COMPANY